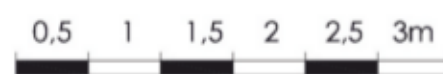
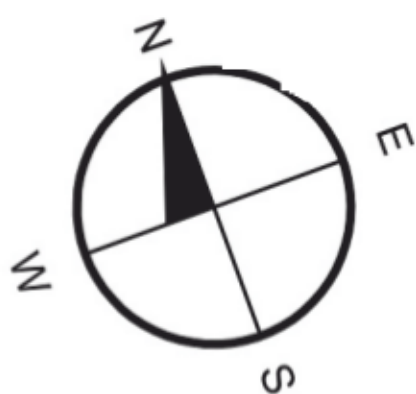
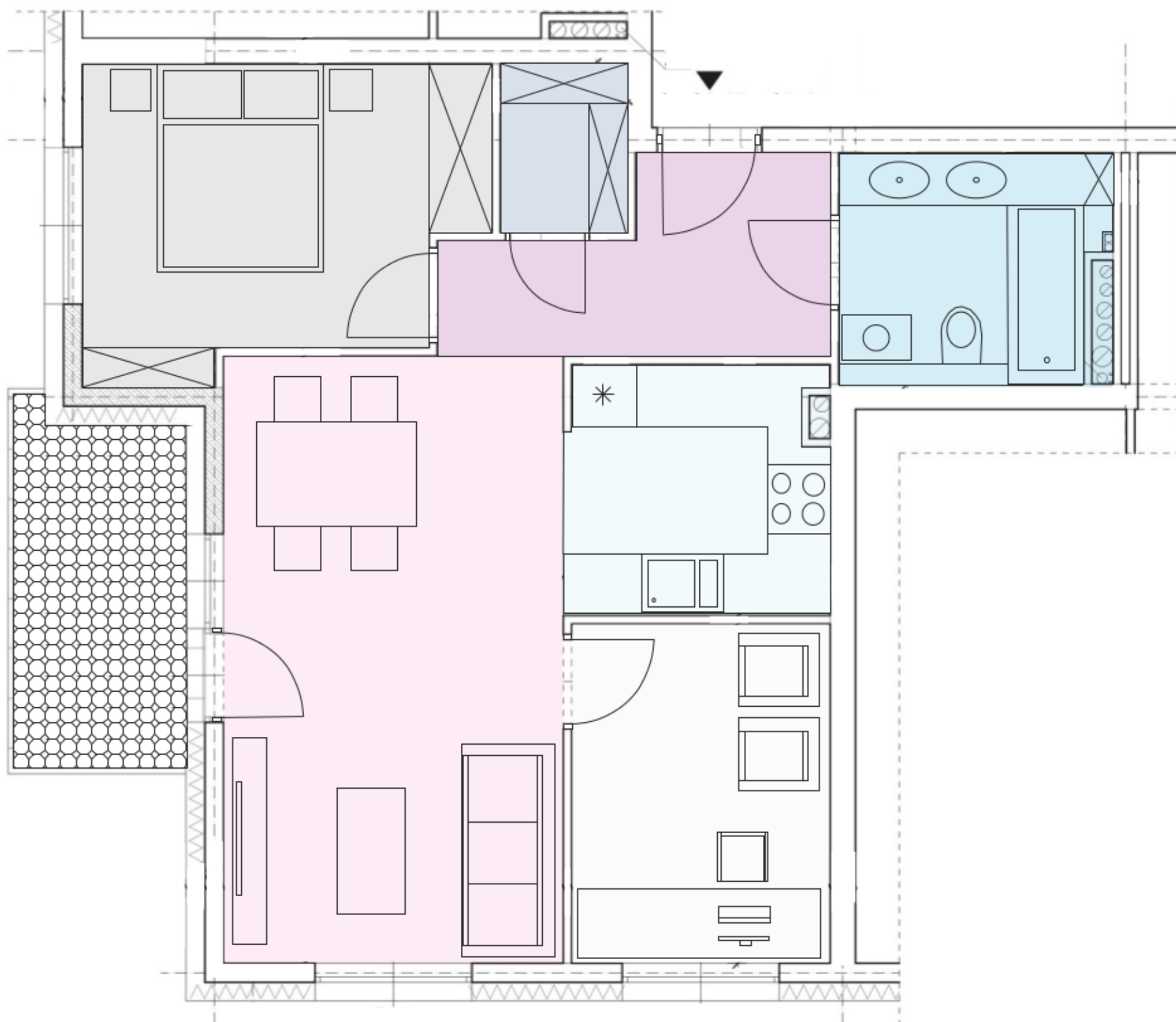




ADATEX

OSIEDLE
FABRYCZNA



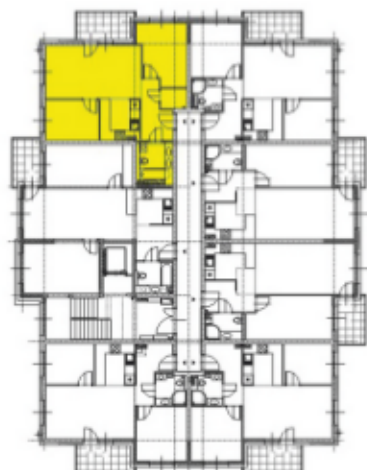
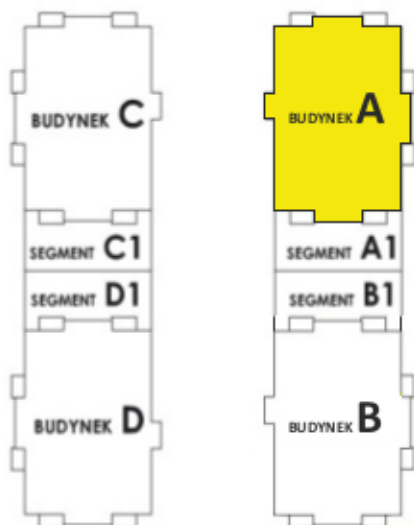
MIESZKANIE nr B.12

1	holl
5,69m ²	
2	łazienka
5,43m ²	
3	aneks kuchenny
5,91m ²	
4	sypialnia 1
8,00m ²	
5	pokój dzienny
18,79m ²	
6	sypialnia 2
10,42m ²	
7	garderoba
1,95m ²	

RAZEM _ 56,19 m²

DANE OGÓLNE

BUDYNEK.....	A
SEGMENT.....	A
PIĘTRO.....	1
MIESZKANIE.....	A.12
ILOŚĆ POKOI.....	3
OGRÓDEK.....	nie



BUDYNEK A / SEGMENT A

MIESZKANIE A.12 = 56,19 m²